

The Copyright of this drawing belongs to Randle White Ltd and shall not be used or reproduced in any form without its express permission. The moral right of the Author is hereby asserted - Copyright © 2000.

Do not scale from this drawing for the purpose of construction. Work to figured dimensions only. All dimensions to be checked on site prior to the execution of any work.

For the avoidance of doubt all dimensions are measured to wall structure and not the finishes unless otherwise stated.

Where any discrepancy is found to exist within or between drawings and/or documents it should be reported to the architect immediately.

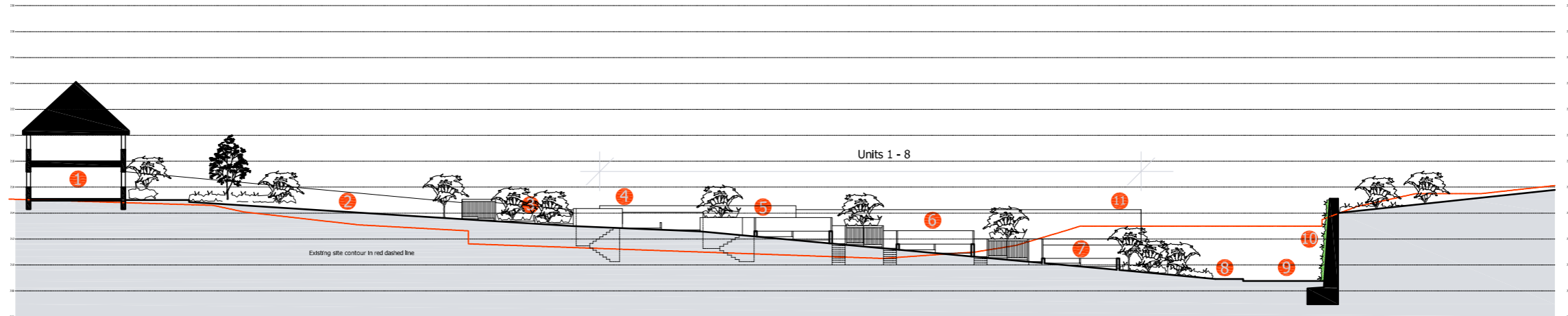
Randle White Ltd shall not be liable for any use of drawings & documents for any purpose other than for which the same were prepared by or on behalf of Randle White Ltd.

- 1 1no. Units - (25) - 4no. bed two storey detached (1160sqft)
2no. car parking spaces per unit
- 2 Turning head/parking for units 23-24
- 3 Living retaining wall with feature tree planting at high level
- 4 2no. Units - (19-20) - 3 bed three storey, semi-basement mews house (1465sqft) 2no. car parking spaces per unit which includes 1no. integral garage
- 5 2no. Units - (17-18) - 3 bed three storey, semi-basement mews house (1250sqft) 2no. car parking spaces per unit
- 6 2no. Units - (13-14) - 3no. bed two storey, semi-basement, semi-detached (830sqft) 2no. car parking spaces per unit
- 7 4no. Units - (9-12) - 3no. bed two storey semi-detached (830sqft) 2no. car parking spaces per unit



SITE SECTION A-A

- 1 Plot 9. detached (990 sqft)
- 2 New road/pavement with boundary fence behind and planting
- 3 Raised parking/planting and bin store for units 7 & 8
- 4 Raised parking for unit 7 & 8 and access steps to gardens
- 5 Raised parking for unit 5 & 6 and access steps to gardens
- 6 Raised parking for unit 3 & 4 and bin store for units 4-6
- 7 Raised parking for unit 1 & 2 and bin store for units 1-3
- 8 Planting/soft landscaping at site entrance and pavement
- 9 New road access off Stockport Rd
- 10 Living retaining wall
- 11 Two storey terrace units (1-8) with internal mezzanine at rear garden level to allow light down into semi basement space



SITE SECTION B-B

Rev.C Date: 2017-02-08 By: RW

Further planner request changes in accordance with email dated 31-01-17

Rev.B Date: 2016-03-01 By: RW

Description: Sections adjusted to suit revised layouts

Rev.A Date: 2016-03-01 By: RW

Description: Sections adjusted to suit revised layouts



Prospect House Mossley Ltd
PROSPECT HOUSE, STOCKPORT RD., MOSSLEY
PROPOSED SITE SECTIONS
December 2015 JK
1:400@A3
13-117(PL)300 Rev C

Randle White Limited
11 Bradshaw Lane
Grappenhall
Cheshire
WA4 2NJ
01925 601670
www.randlewhite.co.uk